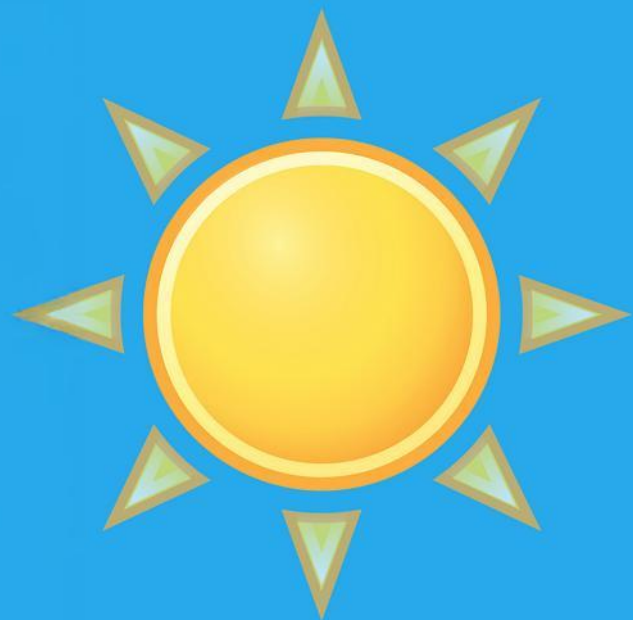




# *June Property Guide*

*What's Inside: Properties for sale, Local news & more!*





# East Bergholt Summer Fair

Sunday 6th July  
Gandish Road Playing Field  
from 1pm to 5pm

Food stalls, Craft Shops, Entertainment & more!

Sponsored by East Bergholt Parish Council





- 📍 *Heath Road, East Bergholt*
- 🏠 *Detached New-Build Bungalow*
- 🛏 *2 Bedrooms*
- 🛁 *1 Bathroom*
- ✅ *Stamp Duty to be covered by the Developer (t&c's applied)*
- 💰 *Asking Price of £415,000*







📍 Quintons Road, East Bergholt

🏠 Detached Property

🛏 5 Bedrooms

🛁 3 Bathrooms

🌳 Private Garden & Swimming Pool

💰 Asking Price of £1,275,000







- 📍 Heath Road, East Bergholt
- 🏠 Detached Grade II\* Listed House
- 🛏 5 Bedrooms
- 🚿 3 Bathrooms
- 📏 2,594 sq ft
- 🌳 1.26 acres
- 🖼 15th Century Doors and Wall Paintings
- 💰 Asking Price of £1,495,000



- 📍 Higham Road, Stratford St Mary
- 🏠 Substantial Detached Farmhouse
- 🛏 7 Bedrooms
- 🚿 4 Bathrooms
- 📏 3,775 sq ft
- 🌳 7.6 acres
- 💰 Asking Price of £1,600,000



- 📍 Hadleigh Road, Holton St Mary
- 🏠 Detached House & Annex
- 🛏 6 Bedrooms
- 🚿 6 Bathrooms
- 📏 3,692 sq ft
- 💰 Asking Price of £1,499,950



- 📍 Mission Lane, East Bergholt
- 🏠 Detached House
- 🛏 6 Bedrooms
- 🚿 3 Bathrooms
- 📏 1,991 sq ft
- 💰 Asking Price of £850,000



- 📍 Hadleigh Road, Raydon
- 🏠 Detached House
- 🛏 4 Bedrooms
- 🚿 2 Bathrooms
- 📏 1,668 sq ft
- 💰 Asking Price of £699,950



- 📍 London Road, Capel St Mary
- 🏠 Detached House
- 🛏 5 Bedrooms
- 🚿 2 Bathrooms
- 📏 2,013 sq ft
- 💰 Offers in Excess of £695,000





- 📍 *Rectory Hill, East Bergholt*
- 🏠 *Detached Period Property*
- 🛏 *3 Bedrooms*
- 🛁 *2 Bathrooms*
- 🌳 *Beautiful Private Garden*
- 💰 *Asking Price of £920,000*







- 📍 *Upper Street, Stratford St Mary*
- 🏠 *Currently Configured as a Pair of Semi-Detached Properties*
- 🛏 *4 Bedrooms*
- 🛁 *2 Bathrooms*
- 🌳 *180 ft Rear Garden in a 0.3 Acre Plot*
- 💰 *Asking Price of £545,000*







- 📍 *The Drift, Capel St Mary*
- 🏠 *Detached House*
- 🛏️ *3 Bedrooms*
- 🚿 *2 Bathrooms*
- 📏 *1,280 sq ft*
- 💰 *Asking Price of £585,000*



- 📍 *Tendring Road, Stones Green*
- 🏠 *Detached House*
- 🛏️ *3 Bedrooms*
- 🚿 *2 Bathrooms*
- 📏 *1,636 sq ft*
- 🌳 *Just under 2 acres (sts)*
- 💰 *Asking Price of £695,000*



- 📍 *Mill Lane, Chelmondiston*
- 🏠 *Detached House*
- 🛏️ *4 Bedrooms*
- 🚿 *3 Bathrooms*
- 📏 *1,948 sq ft*
- 💰 *Asking Price of £595,000*



- 📍 *Carriers Court, East Bergholt*
- 🏠 *Detached Bungalow*
- 🛏️ *4 Bedrooms*
- 🚿 *2 Bathrooms*
- 📏 *1,120 sq ft*
- 💰 *Asking Price of £549,000*



- 📍 *The Heath, Tattingstone*
- 🏠 *Detached Chalet Style Property*
- 🛏️ *3 Bedrooms*
- 🚿 *3 Bathrooms*
- 📏 *1,001 sq ft*
- 💰 *Asking Price of £500,000*



- 📍 *Broom Way, Capel St Mary*
- 🏠 *Detached House*
- 🛏️ *4 Bedrooms*
- 🚿 *2 Bathrooms*
- 📏 *1,453 sq ft*
- 💰 *Offers in Excess of £499,950*





*Church Lane, Beaumont*



*Grade II Listed Barn Conversion*



*2 Bedrooms*



*1 Bathrooms*



*1,482 sq ft*



*Asking Price of £475,000*







*Church Lane, Beaumont*



*Grade II Listed Barn Conversion*



*2 Bedrooms*



*1 Bathrooms*



*1,688 sq ft*



*Asking Price of £575,000*







- 📍 *Haleigh Road, Holton St Mary*
- 🏠 *Detached Bungalow*
- 🛏️ *3 Bedrooms*
- 🚿 *1 Bathrooms*
- 📏 *1,184 sq ft*
- 💰 *Asking Price of £475,000*



- 📍 *Long Meadow, Copdock*
- 🏠 *Detached House*
- 🛏️ *3 Bedrooms*
- 🚿 *2 Bathrooms*
- 📏 *1,539 sq ft*
- 💰 *Asking Price of £475,000*



- 📍 *Chapel Close, Capel St. Mary*
- 🏠 *Semi-Detached House*
- 🛏️ *4 Bedrooms*
- 🚿 *2 Bathrooms*
- 💰 *Asking Price of £465,000*



- 📍 *Spring Cottages, East Bergholt*
- 🏠 *Semi-Detached House*
- 🛏️ *2 Bedrooms*
- 🚿 *1 Bathrooms*
- 💰 *Asking Price of £465,000*



- 📍 *The Street, Raydon*
- 🏠 *Semi-Detached House*
- 🛏️ *3 Bedrooms*
- 🚿 *2 Bathrooms*
- 💰 *Asking Price of £440,000*



- 📍 *South View Green*
- 🏠 *Detached Bungalow*
- 🛏️ *3 Bedrooms*
- 🚿 *1 Bathroom*
- 💰 *Asking Price of £425,000*





*Hazel Shrub, Bentley*



*New-Build Detached Bungalow*



*4 Bedrooms*



*2 Bathrooms*



*1,744 sq ft*



*Asking Price of £815,000*







*Hazel Shrub, Bentley*



*New-Build Detached Bungalow*



*4 Bedrooms*



*2 Bathrooms*



*1,744 sq ft*



*Asking Price of £799,995*







- 📍 Whitesfield, East Bergholt
- 🏠 Detached Bungalow
- 🛏 2 Large Bedrooms
- 🚿 1 Bathroom
- 🔑 657 sq ft
- 💰 Asking Price of £395,000



- 📍 Lower Street, Stratford St Mary
- 🏠 Detached Grade II\* Listed House
- 🛏 4 Bedrooms
- 🚿 2 Bathrooms
- 🌳 0.75 Acre Plot
- 💰 Asking Price of £365,000



- 📍 Prior Gardens, Bentley
- 🏠 Semi-Detached House
- 🛏 3 Bedrooms
- 🚿 2 Bathrooms
- 💰 Asking Price of £345,000



- 📍 Broom Knoll, East Bergholt
- 🏠 Semi-Detached Bungalow
- 🛏 3 Bedrooms
- 🚿 1 Bathrooms
- 💰 Asking Price of £325,000



- 📍 Upper Street, Stratford St Mary
- 🏠 Detached House
- 🛏 3 Bedrooms
- 🚿 1 Bathrooms
- 💰 Asking Price of £315,000



- 📍 Constable Park, East Bergholt
- 🏠 Detached Holiday Lodge
- 🛏 2 Bedrooms
- 🚿 1 Bathrooms
- 💰 Asking Price of £299,995





*The Street, Raydon*



*Plot with Planning Consent*



*Proposed 2 Bedrooms*



*Proposed 2 Bathrooms*



*1,560 sq ft*



*Asking Price of £192,500*







**01206 299222**



***grierandpartners\_eb***



***www.grierandpartners.co.uk***



***@grierandpartnersestateagents***



***enquiries@grierandpartners.co.uk***



***The Old Shop, The Street, East Bergholt, Colchester, CO7 6TF***